

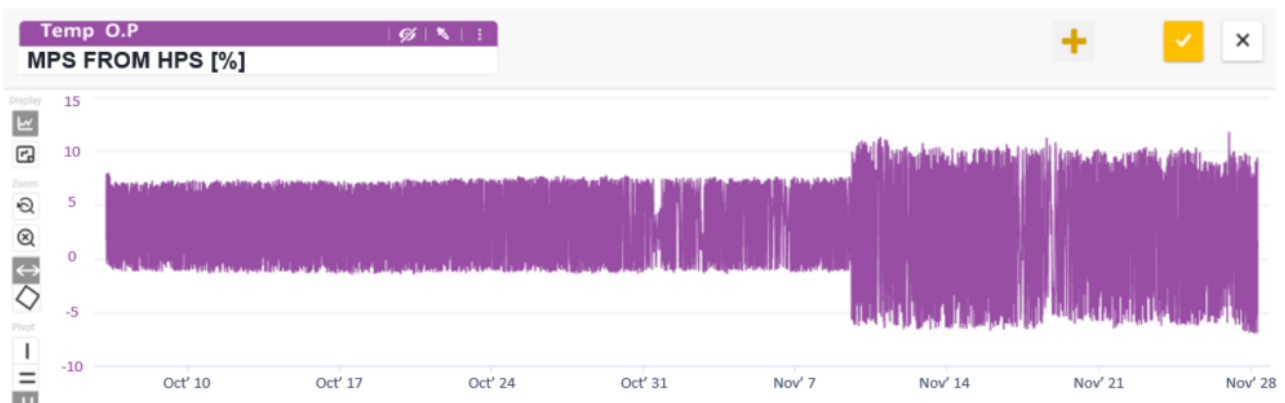
HUMAN MISTAKE DETECTION

EVENT REPORTED by SAM GUARD®

Detected a fluctuation increase of the temperature valve in the MP steam header, without any S.P change.

MAINTENANCE TEAM FINDINGS

The issue was communicated to the plant team which found that there was a tuning trial, but due to a human mistake, the values were not resumed to the initial stage.



COST / DOWNTIME AVOIDED

The detection identified an instability which was caused by human intervention and would've been overlooked.

CUSTOMER FEEDBACK

“An important detection, enhancing the protection from human mistakes.”