

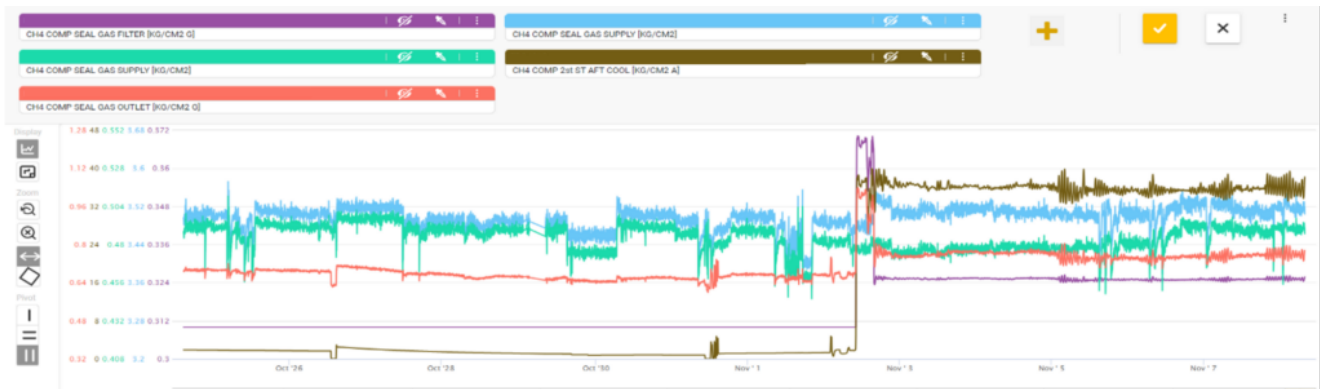
UNSTABLE PRESSURE IN CH4 COMPRESSOR

EVENT REPORTED by SAM GUARD®

Since November 5th, abnormal fluctuations in methane pressure have been observed in one of the critical compressors at the facility.

MAINTENANCE TEAM FINDINGS

The issue was communicated to the plant team, who discovered an unrecognized problem with the compressor's pressure stability. As a result of the SAM GUARD® event, the flow and pressure valve sensors were rechecked, and tuning was performed on the relevant control valves.



COST / DOWNTIME AVOIDED

The early alert helped identify instability in one of the plant's critical compressors and contributed to maintaining stable manufacturing operations.

CUSTOMER FEEDBACK

"SAM GUARD® provided an excellent finding, enabling the timely detection of anomalies. This allowed the process to be stabilized before any damage occurred."